



OAKLANDS FARM SOLAR PARK

Applicant: Oaklands Farm Solar Ltd

Environmental Statement

Appendix 10.7 – Indicative Abnormal Load Swept Path Analysis

January 2024

Document Ref: EN010122/APP/6.1/Appx 10.7

Revision: -

Planning Act 2008

Infrastructure Planning (Application: Prescribed Forms and
Procedure) Regulations 2009 - 5(2)(a)



Oaklands Farm Solar Park - Environmental Statement Volume 3

Appendix 10.7: Indicative Abnormal Load Swept Path Analysis

Final report

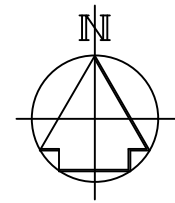
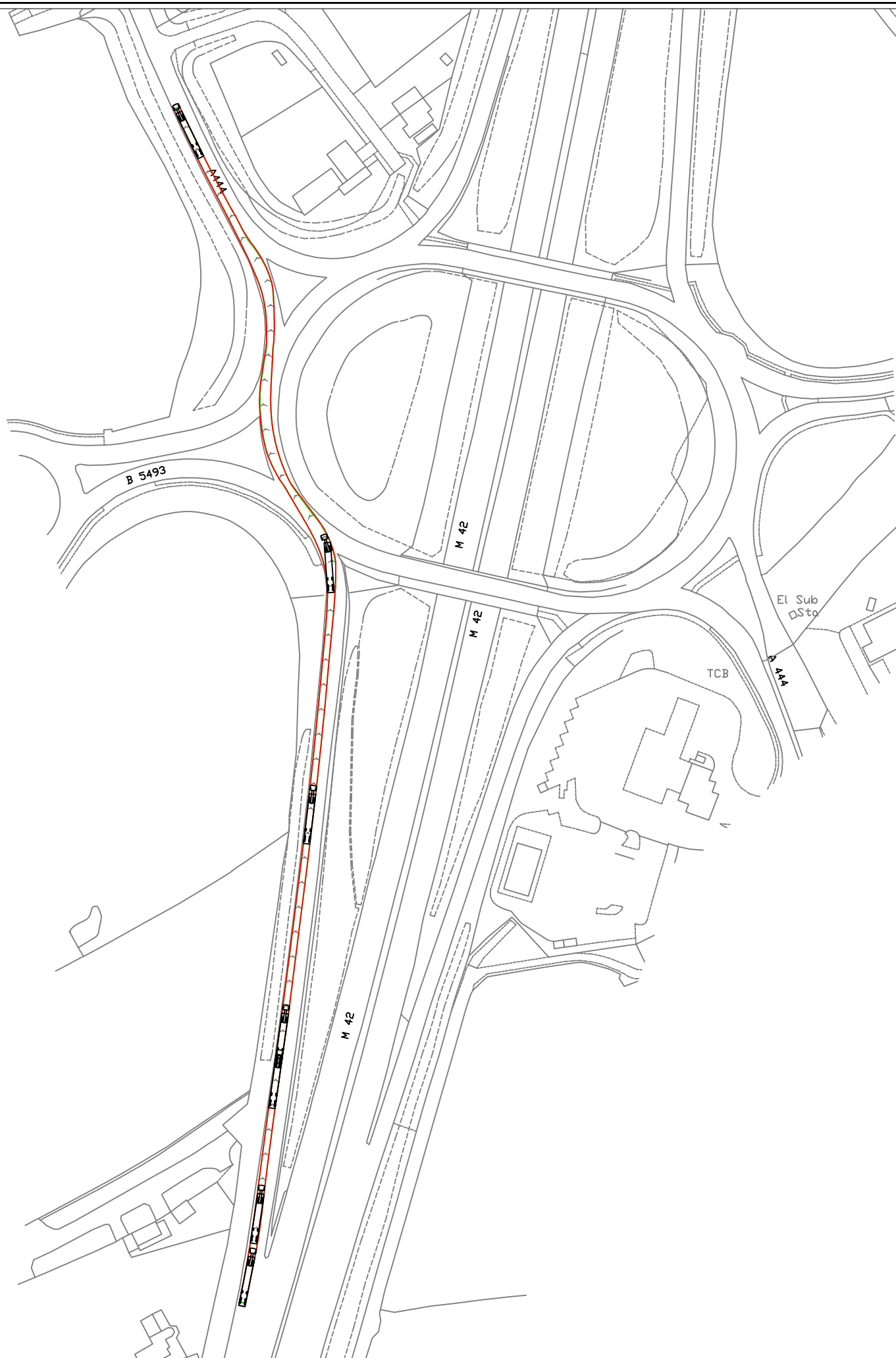
Prepared by LUC

January 2024

Appendix 10.7

Indicative Abnormal Load Swept Path Analysis

Swept path analysis of the anticipated abnormal load vehicle traveling along the proposed Abnormal Indivisible Load route, including highway boundary.



3200-3299/3299 Oaklands Solar Farm/Project Files/CAD			
	A	MJ	16.08.23

REVISIONS	REV	Auth	DATE
-----------	-----	------	------

Key:

- Base mapping
- Vehicle body at widest point
- Vehicle wheel track at widest point

Notes:

- Specific vehicle configuration to be checked by specialist haulage company. Do not rely on this drawing for confirmation of safety.
- Highway boundary extent only included on areas where overrun has been identified.

Vehicle configuration

Broshuis TR18421B with OPL20117 Extended 6500	23.580m
Overall Length	2.550m
Overall Width	3.417m
Overall Body Height	0.341m
Min Body Ground Clearance	2.550m
Track Width	6.00s
Lock to lock time	12.500m
Wall to Wall Turning Radius	

For Information Only	A	MJ	16.08.23
----------------------	---	----	----------

PURPOSE OF ISSUE	REV	Auth	DATE
------------------	-----	------	------

Integrated Transport Planning Ltd
 Cornerblock
 2 Cornwall Street
 Birmingham
 B3 2DX
 Tel: 0121 285 7301
<http://www.itpworld.net>

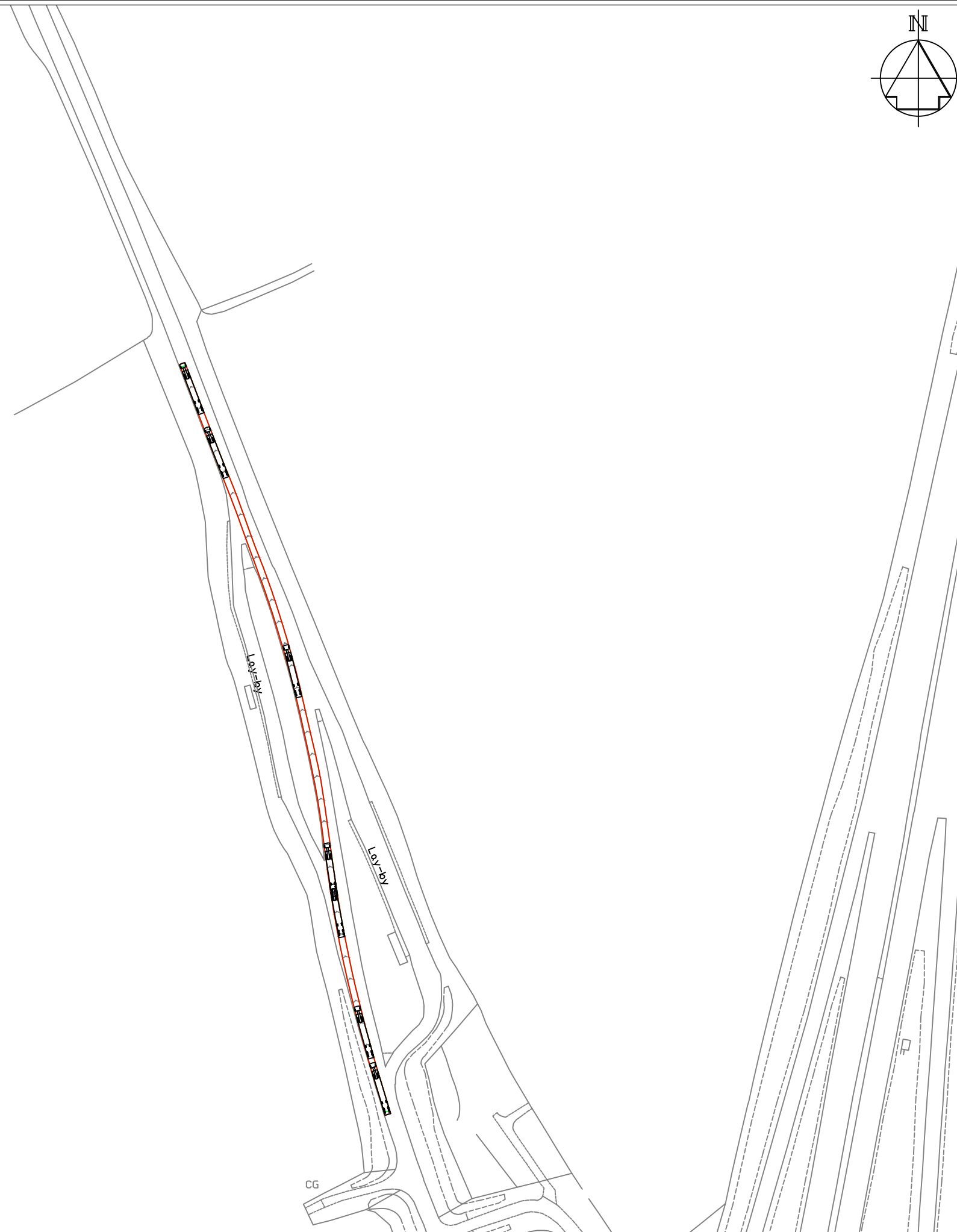
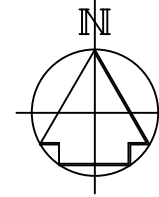
CLIENT
BayWa r.e

PROJECT
Oaklands Solar Farm

DRAWING TITLE
Indicative AIL Construction Vehicle Swept Path Analysis

BASE SCALE 1: 20 @ A3	DATE August 2023
--------------------------	---------------------

DRAWING NUMBER DWG/3299/001	REV A
---------------------------------------	----------



3200-3299/3299 Oaklands Solar Farm/Project Files/CAD			
	A	MJ	16.08.23

REVISIONS	REV	Auth	DATE
-----------	-----	------	------

Key:

- Base mapping
- Vehicle body at widest point
- Vehicle wheel track at widest point

Notes:

- Specific vehicle configuration to be checked by specialist haulage company. Do not rely on this drawing for confirmation of safety.
- Highway boundary extent only included on areas where overrun has been identified.

Vehicle configuration

Broshuis TR18421B with OPL20117 Extended 6500	
Overall Length	23.580m
Overall Width	2.550m
Overall Body Height	3.417m
Min Body Ground Clearance	0.341m
Track Width	2.550m
Lock to lock time	6.00s
Wall to Wall Turning Radius	12.500m

For Information Only			
	A	MJ	16.08.23
PURPOSE OF ISSUE	REV	Auth	DATE

Integrated Transport Planning Ltd
 Cornerblock
 2 Cornwall Street
 Birmingham
 B3 2DX

Tel: 0121 285 7301
<http://www.itpworld.net>

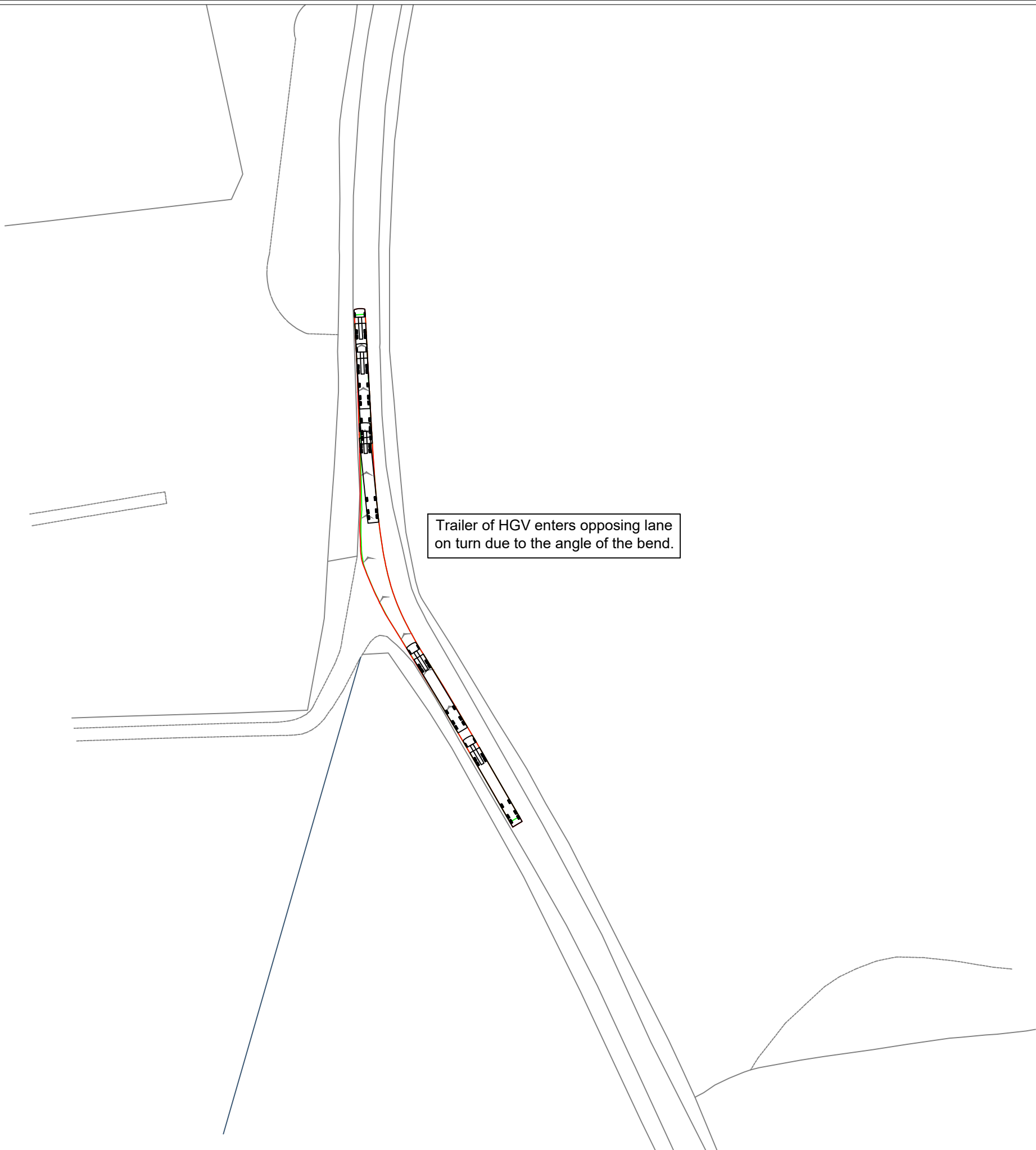
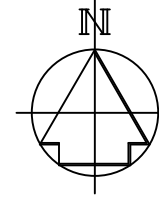
CLIENT
BayWa r.e

PROJECT
Oaklands Solar Farm

DRAWING TITLE
Indicative AIL Construction Vehicle Swept Path Analysis

BASE SCALE 1: 20 @ A3	DATE August 2023
--------------------------	---------------------

DRAWING NUMBER DWG/3299/002	REV A
---------------------------------------	----------



Trailer of HGV enters opposing lane on turn due to the angle of the bend.

3200-3299/3299 Oaklands Solar Farm/Project Files/CAD			
	A	MJ	16.08.23

REVISIONS	REV	Auth	DATE
-----------	-----	------	------

- Key:**
- Base mapping
 - Vehicle body at widest point
 - Vehicle wheel track at widest point

- Notes:**
1. Specific vehicle configuration to be checked by specialist haulage company. Do not rely on this drawing for confirmation of safety.
 2. Highway boundary extent only included on areas where overrun has been identified.

Vehicle configuration

Broshuis TR18421B with OPL20117 Extended 6500
 Overall Length 23.580m
 Overall Width 2.550m
 Overall Body Height 3.417m
 Min Body Ground Clearance 0.341m
 Track Width 2.550m
 Lock to lock time 6.00s
 Wall to Wall Turning Radius 12.500m

For Information Only			
	A	MJ	16.08.23

PURPOSE OF ISSUE	REV	Auth	DATE
Integrated Transport Planning Ltd Cornerblock 2 Cornwall Street Birmingham B3 2DX Tel: 0121 285 7301 http://www.itpworld.net			

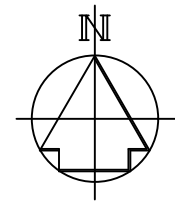
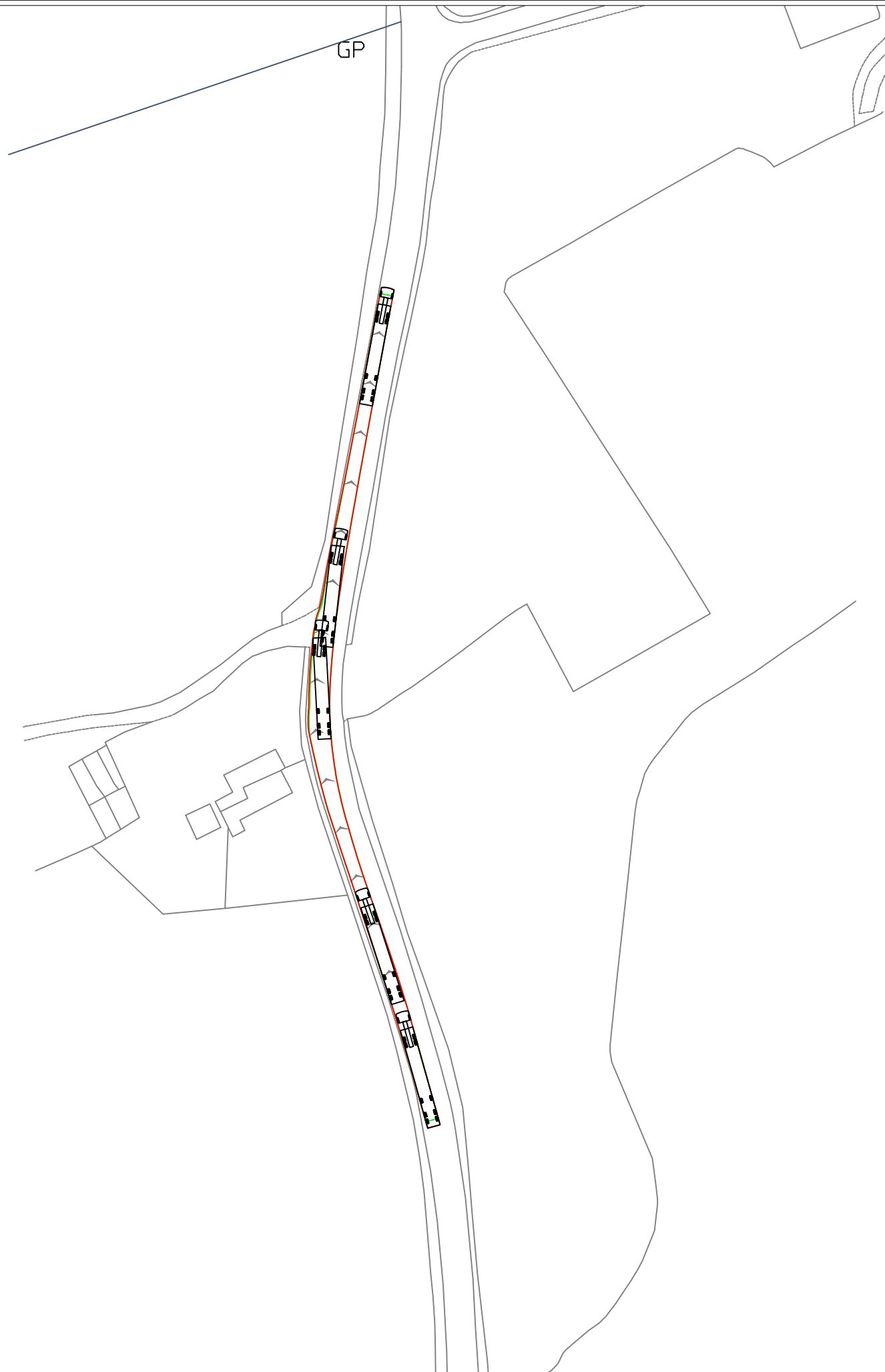
CLIENT
BayWa r.e

PROJECT
Oaklands Solar Farm

DRAWING TITLE
Indicative AIL Construction Vehicle Swept Path Analysis

BASE SCALE 1: 10 @ A3	DATE August 2023
--------------------------	---------------------

DRAWING NUMBER DWG/3299/003	REV A
---------------------------------------	----------



3200-3299/3299 Oaklands Solar Farm Project Files\CAD			
	A	MJ	16.08.23

REVISIONS	REV	Auth	DATE
-----------	-----	------	------

Key:

- Base mapping
- Vehicle body at widest point
- Vehicle wheel track at widest point

Notes:

- Specific vehicle configuration to be checked by specialist haulage company. Do not rely on this drawing for confirmation of safety.
- Highway boundary extent only included on areas where overrun has been identified.

Vehicle configuration

Broshuis TR18421B with OPL20117 Extended 6500	
Overall Length	23.580m
Overall Width	2.550m
Overall Body Height	3.417m
Min Body Ground Clearance	0.341m
Track Width	2.550m
Lock to lock time	6.00s
Wall to Wall Turning Radius	12.500m

For Information Only			
	A	MJ	16.08.23

PURPOSE OF ISSUE	REV	Auth	DATE
------------------	-----	------	------

Integrated Transport Planning Ltd
 Cornerblock
 2 Cornwall Street
 Birmingham
 B3 2DX
 Tel: 0121 285 7301
<http://www.itpworld.net>

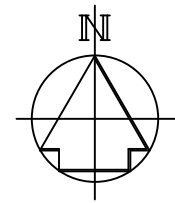
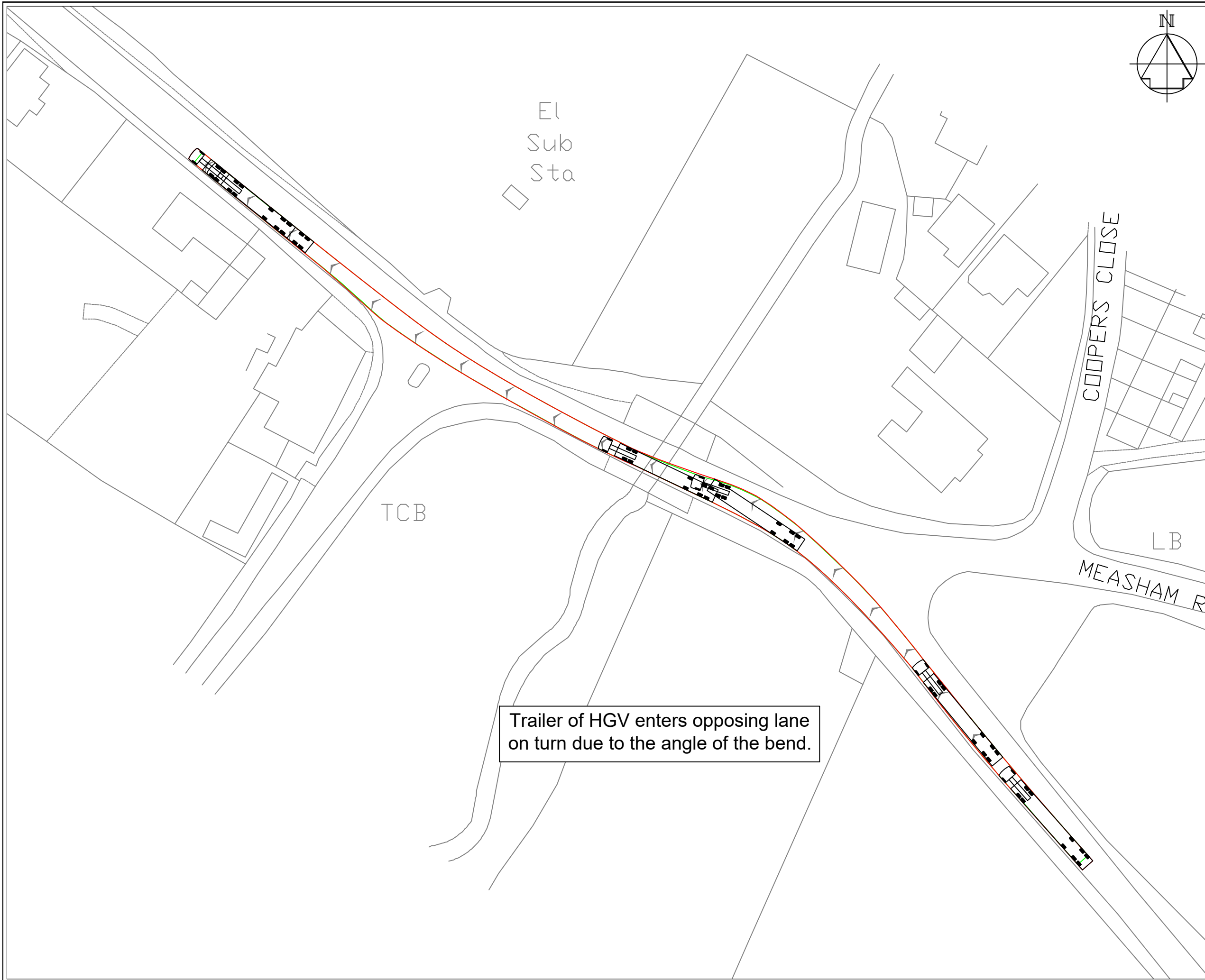
CLIENT
BayWa r.e

PROJECT
Oaklands Solar Farm

DRAWING TITLE
Indicative AIL Construction Vehicle Swept Path Analysis

BASE SCALE 1: 10 @ A3	DATE August 2023
--------------------------	---------------------

DRAWING NUMBER DWG/3299/004	REV A
---------------------------------------	----------



3200-3299/3299 Oaklands Solar Farm/Project Files/CAD			
	A	MJ	16.08.23

REVISIONS	REV	Auth	DATE
-----------	-----	------	------

Key:

- Base mapping
- Vehicle body at widest point
- Vehicle wheel track at widest point

Notes:

- Specific vehicle configuration to be checked by specialist haulage company. Do not rely on this drawing for confirmation of safety.
- Highway boundary extent only included on areas where overrun has been identified.

Vehicle configuration

Broshuis TR18421B with OPL20117 Extended 6500

Overall Length	23.580m
Overall Width	2.550m
Overall Body Height	3.417m
Min Body Ground Clearance	0.341m
Track Width	2.550m
Lock to lock time	6.00s
Wall to Wall Turning Radius	12.500m

For Information Only	A	MJ	16.08.23
----------------------	---	----	----------

PURPOSE OF ISSUE	REV	Auth	DATE
------------------	-----	------	------

Integrated Transport Planning Ltd
 Cornerblock
 2 Cornwall Street
 Birmingham
 B3 2DX

Tel: 0121 285 7301
<http://www.itpworld.net>

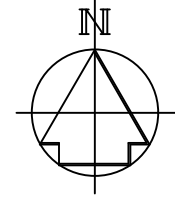
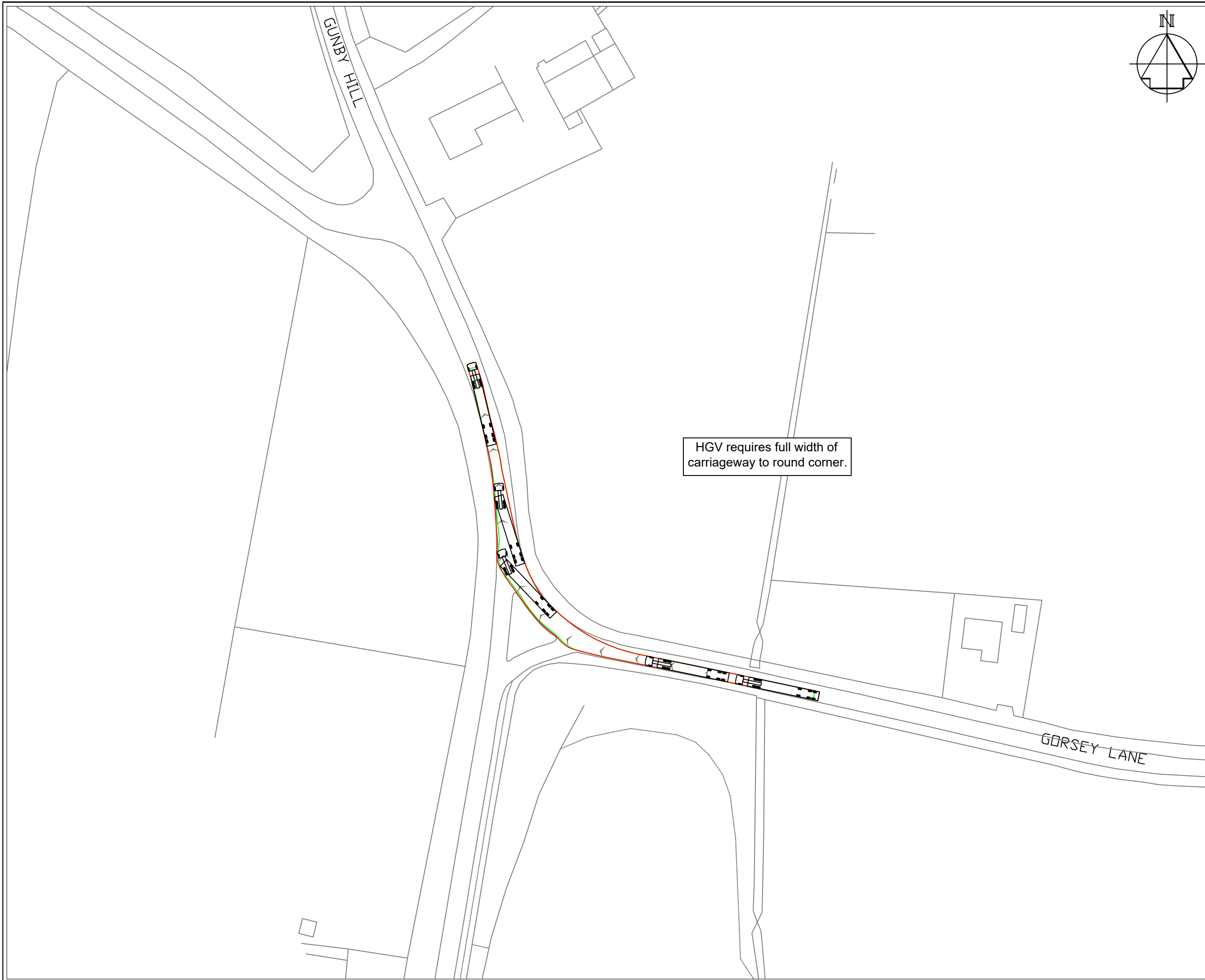
CLIENT
BayWa r.e

PROJECT
Oaklands Solar Farm

DRAWING TITLE
Indicative AIL Construction Vehicle Swept Path Analysis

BASE SCALE 1: 1000 @ A3	DATE August 2023
----------------------------	---------------------

DRAWING NUMBER DWG/3299/005	REV A
---------------------------------------	----------



3200-3299/3299 Oaklands Solar Farm/Project Files/CAD			
	A	MJ	16.08.23

REVISIONS	REV	Auth	DATE
-----------	-----	------	------

Key:

- Base mapping
- Vehicle body at widest point
- Vehicle wheel track at widest point

Notes:

- Specific vehicle configuration to be checked by specialist haulage company. Do not rely on this drawing for confirmation of safety.
- Highway boundary extent only included on areas where overrun has been identified.

Vehicle configuration

Broshuis TR18421B with OPL20117 Extended 6500	23.580m
Overall Length	2.550m
Overall Width	3.417m
Overall Body Height	0.341m
Min Body Ground Clearance	2.550m
Track Width	6.00s
Lock to lock time	12.500m
Wall to Wall Turning Radius	

HGV requires full width of carriageway to round corner.

For Information Only			
	A	MJ	16.08.23

PURPOSE OF ISSUE	REV	Auth	DATE
------------------	-----	------	------

Integrated Transport Planning Ltd
 Cornerblock
 2 Cornwall Street
 Birmingham
 B3 2DX
 Tel: 0121 285 7301
<http://www.itpworld.net>

CLIENT
BayWa r.e

PROJECT
Oaklands Solar Farm

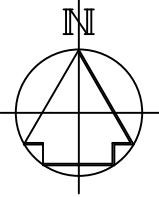
DRAWING TITLE
Indicative AIL Construction Vehicle Swept Path Analysis

BASE SCALE 1: 10 @ A3	DATE August 2023
--------------------------	---------------------

DRAWING NUMBER DWG/3299/006	REV A
---------------------------------------	----------



HGV required to travel in the centre of the carriageway to keep the trailer off of the verge.



3200-3299/3299 Oaklands Solar Farm/Project Files/CAD			
	A	MJ	16.08.23

REVISIONS	REV	Auth	DATE
-----------	-----	------	------

Key:

- Base mapping
- Vehicle body at widest point
- Vehicle wheel track at widest point

Notes:

- Specific vehicle configuration to be checked by specialist haulage company. Do not rely on this drawing for confirmation of safety.
- Highway boundary extent only included on areas where overrun has been identified.

Vehicle configuration

Broshuis TR18421B with OPL20117 Extended 6500
 Overall Length 23.580m
 Overall Width 2.550m
 Overall Body Height 3.417m
 Min Body Ground Clearance 0.341m
 Track Width 2.550m
 Lock to lock time 6.00s
 Wall to Wall Turning Radius 12.500m

For Information Only			
	A	MJ	16.08.23

PURPOSE OF ISSUE	REV	Auth	DATE
------------------	-----	------	------

Integrated Transport Planning Ltd
 Cornerblock
 2 Cornwall Street
 Birmingham
 B3 2DX
 Tel: 0121 285 7301
<http://www.itpworld.net>

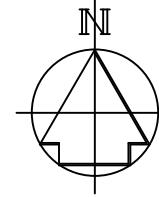
CLIENT
BayWa r.e

PROJECT
Oaklands Solar Farm

DRAWING TITLE
Indicative AIL Construction Vehicle Swept Path Analysis

BASE SCALE 1: 10 @ A3	DATE August 2023
--------------------------	---------------------

DRAWING NUMBER DWG/3299/007	REV A
---------------------------------------	----------



3200-3299/3299 Oaklands Solar Farm/Project Files/CAD			
	A	MJ	16.08.23

REVISIONS	REV	Auth	DATE
-----------	-----	------	------

- Key:**
- Base mapping
 - Vehicle body at widest point
 - Vehicle wheel track at widest point
 - Highway Boundary

- Notes:**
1. Specific vehicle configuration to be checked by specialist haulage company. Do not rely on this drawing for confirmation of safety.
 2. Highway boundary extent only included on area where overrun has been identified.

Vehicle configuration

Broshuis TR18421B with OPL20117 Extended 6500
 Overall Length 23.580m
 Overall Width 2.550m
 Overall Body Height 3.417m
 Min Body Ground Clearance 0.341m
 Track Width 2.550m
 Lock to lock time 6.00s
 Wall to Wall Turning Radius 12.500m

For Information Only			
	A	MJ	16.08.23

PURPOSE OF ISSUE

	REV	Auth	DATE
--	-----	------	------

Integrated Transport Planning Ltd
 Cornerblock
 2 Cornwall Street
 Birmingham
 B3 2DX
 Tel: 0121 285 7301
<http://www.itpworld.net>

CLIENT
BayWa r.e

PROJECT
Oaklands Solar Farm

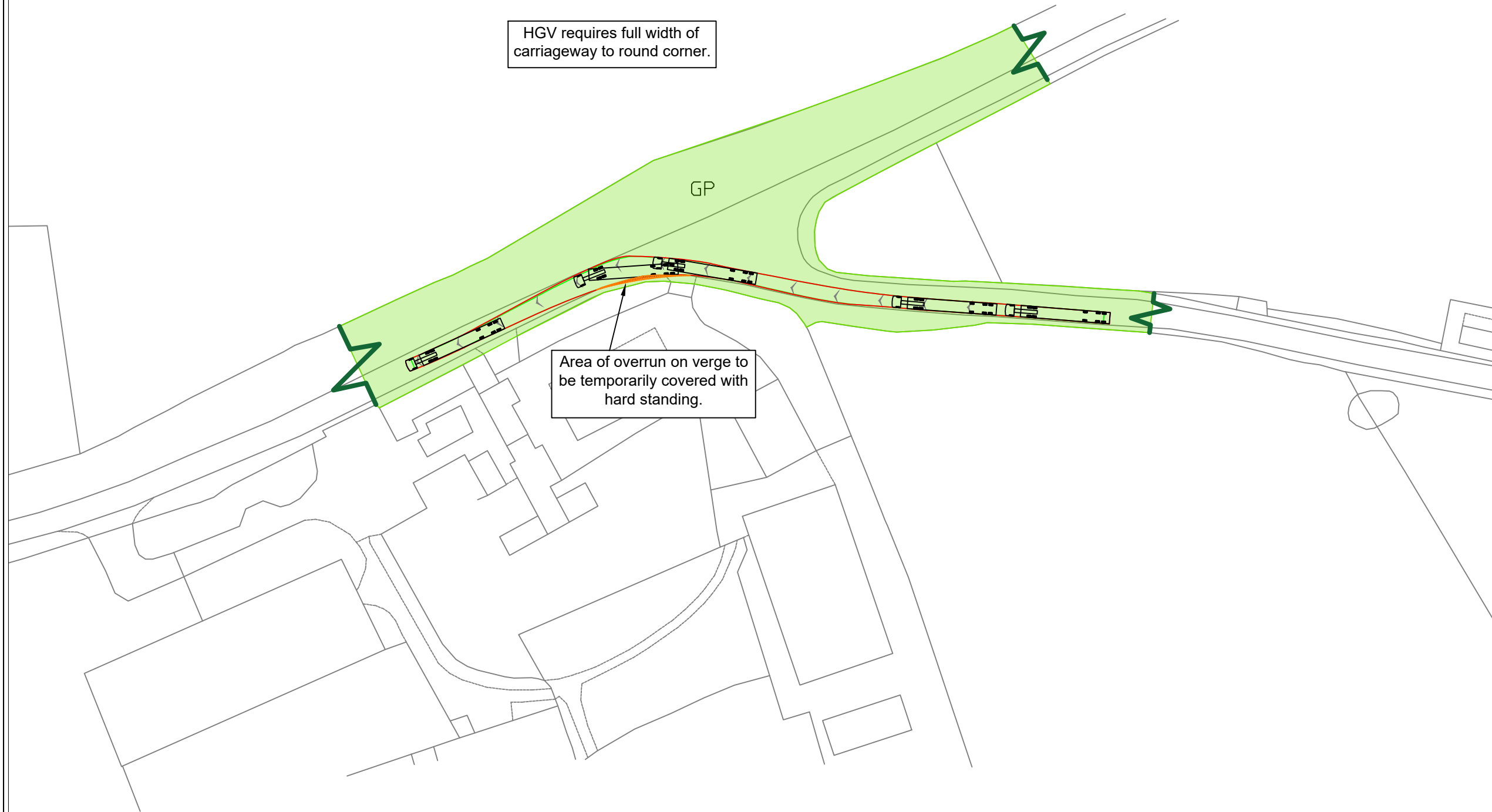
DRAWING TITLE
Indicative AIL Construction Vehicle Swept Path Analysis

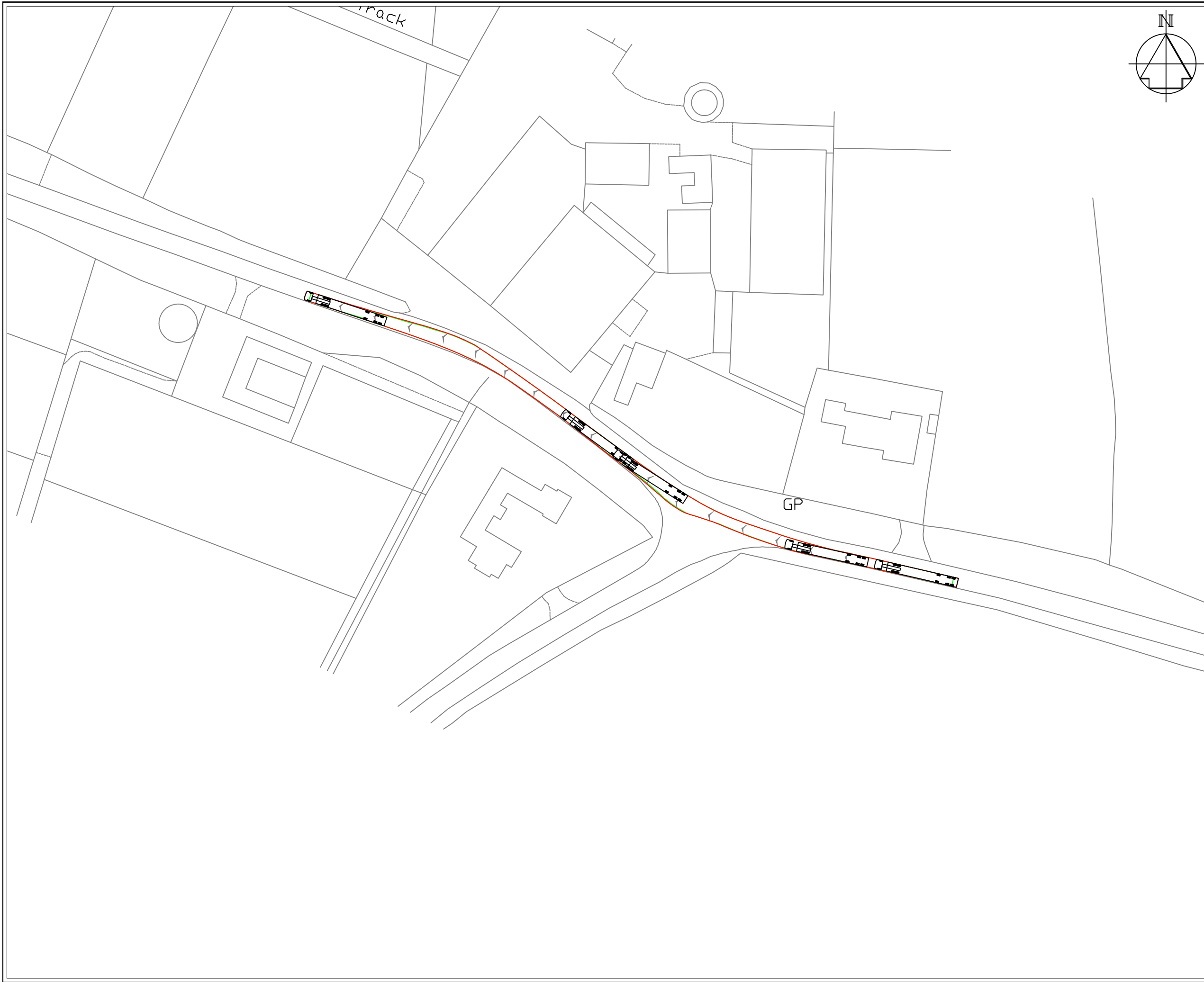
BASE SCALE 1: 10 @ A3	DATE August 2023
---------------------------------	----------------------------

DRAWING NUMBER DWG/3299/008	REV A
--	-----------------

HGV requires full width of carriageway to round corner.

Area of overrun on verge to be temporarily covered with hard standing.





3200-3299/3299 Oaklands Solar Farm/Project Files/CAD			
	A	MJ	16.08.23

REVISIONS	REV	Auth	DATE
-----------	-----	------	------

Key:

- Base mapping
- Vehicle body at widest point
- Vehicle wheel track at widest point

Notes:

- Specific vehicle configuration to be checked by specialist haulage company. Do not rely on this drawing for confirmation of safety.
- Highway boundary extent only included on areas where overrun has been identified.

Vehicle configuration

Broshuis TR18421B with OPL20117 Extended 6500	23.580m
Overall Length	23.580m
Overall Width	2.550m
Overall Body Height	3.417m
Min Body Ground Clearance	0.341m
Track Width	2.550m
Lock to lock time	6.00s
Wall to Wall Turning Radius	12.500m

For Information Only			
	A	MJ	16.08.23

PURPOSE OF ISSUE	REV	Auth	DATE
------------------	-----	------	------

Integrated Transport Planning Ltd
 Cornerblock
 2 Cornwall Street
 Birmingham
 B3 2DX
 Tel: 0121 285 7301
<http://www.itpworld.net>

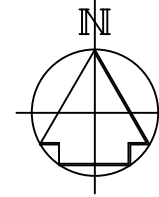
CLIENT
BayWa r.e

PROJECT
Oaklands Solar Farm

DRAWING TITLE
Indicative AIL Construction Vehicle Swept Path Analysis

BASE SCALE 1: 10 @ A3	DATE August 2023
---------------------------------	----------------------------

DRAWING NUMBER DWG/3299/009	REV A
--	-----------------



3200-3299/3299 Oaklands Solar Farm Project Files\CAD			
	A	MJ	16.08.23

REVISIONS	REV	Auth	DATE
-----------	-----	------	------

- Key:**
- Base mapping
 - Vehicle body at widest point
 - Vehicle wheel track at widest point
 - Highway Boundary

- Notes:**
1. Specific vehicle configuration to be checked by specialist haulage company. Do not rely on this drawing for confirmation of safety.
 2. Highway boundary extent only included on area where overrun has been identified.

Vehicle configuration

Broshuis TR18421B with OPL20117 Extended 6500
 Overall Length 23.580m
 Overall Width 2.550m
 Overall Body Height 3.417m
 Min Body Ground Clearance 0.341m
 Track Width 2.550m
 Lock to lock time 6.00s
 Wall to Wall Turning Radius 12.500m

For Information Only			
	A	MJ	16.08.23

PURPOSE OF ISSUE

	REV	Auth	DATE
--	-----	------	------

Integrated Transport Planning Ltd
 Cornerblock
 2 Cornwall Street
 Birmingham
 B3 2DX
 Tel: 0121 285 7301
 http://www.itpworld.net

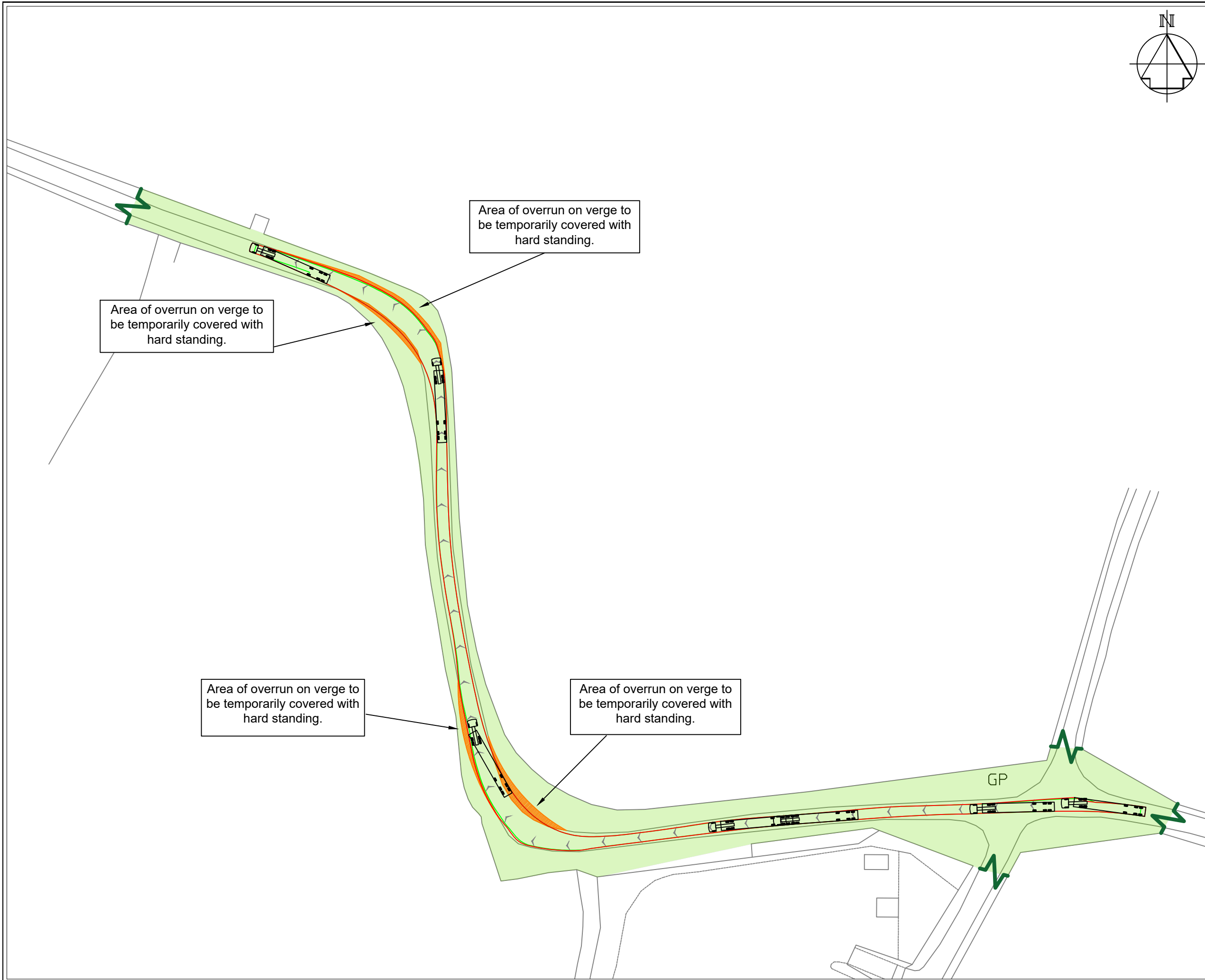
CLIENT
BayWa r.e

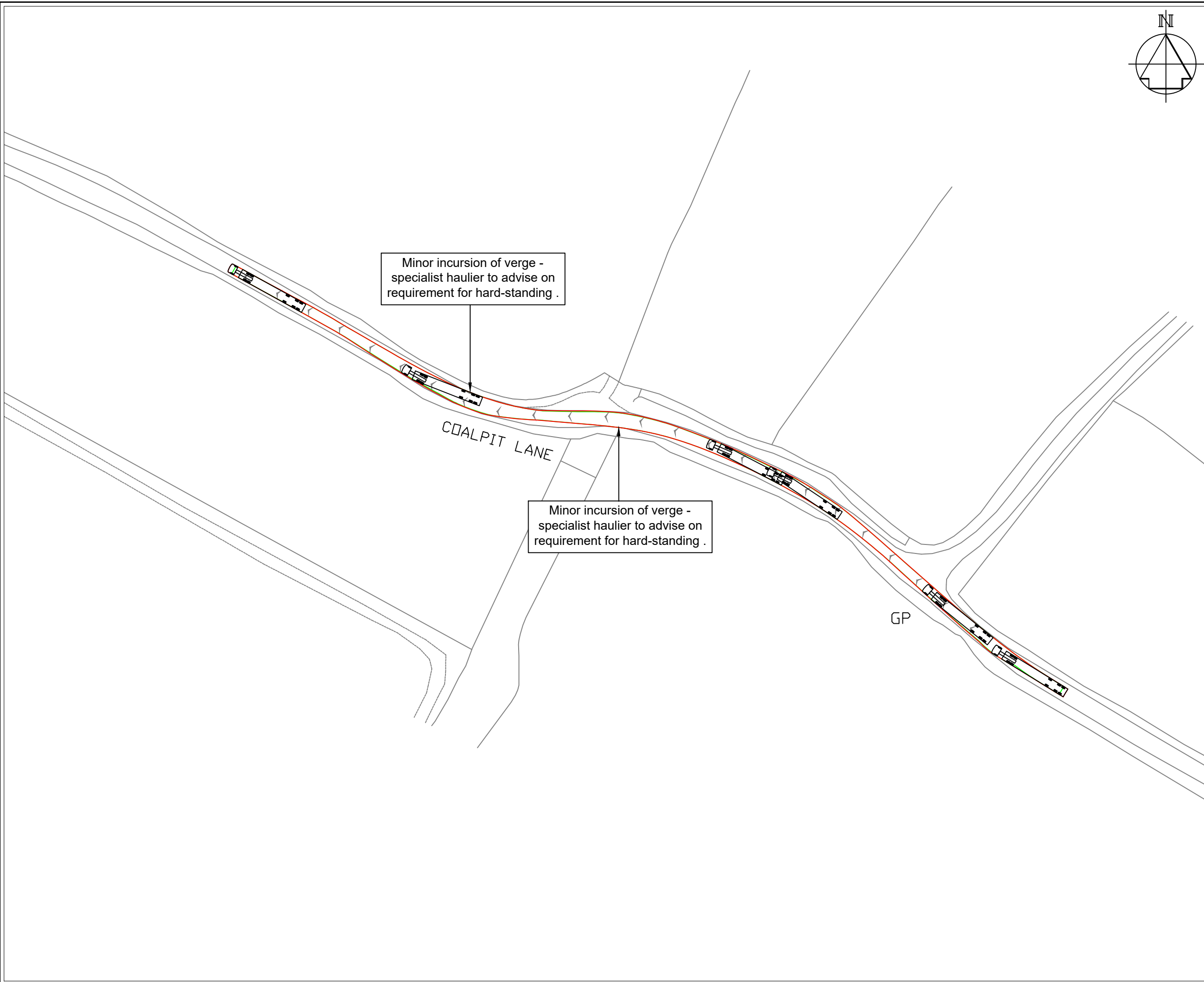
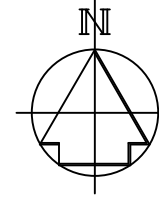
PROJECT
Oaklands Solar Farm

DRAWING TITLE
Indicative AIL Construction Vehicle Swept Path Analysis

BASE SCALE 1: 10 @ A3	DATE August 2023
---------------------------------	----------------------------

DRAWING NUMBER DWG/3299/010	REV A
--	-----------------





3200-3299/011 Oaklands Solar Farm/Project Files/CAD			
	A	MJ	16.08.23

REVISIONS	REV	Auth	DATE
-----------	-----	------	------

Key:

- Base mapping
- Vehicle body at widest point
- Vehicle wheel track at widest point

Notes:

- Specific vehicle configuration to be checked by specialist haulage company. Do not rely on this drawing for confirmation of safety.
- Highway boundary extent only included on areas where overrun has been identified.

Vehicle configuration

Broshuis TR18421B with OPL20117 Extended 6500	23.580m
Overall Length	2.550m
Overall Width	3.417m
Overall Body Height	0.341m
Min Body Ground Clearance	2.550m
Track Width	6.00s
Lock to lock time	12.500m
Wall to Wall Turning Radius	

For Information Only	A	MJ	16.08.23
----------------------	---	----	----------

PURPOSE OF ISSUE	REV	Auth	DATE
------------------	-----	------	------

Integrated Transport Planning Ltd
 Cornerblock
 2 Cornwall Street
 Birmingham
 B3 2DX
 Tel: 0121 285 7301
<http://www.itpworld.net>

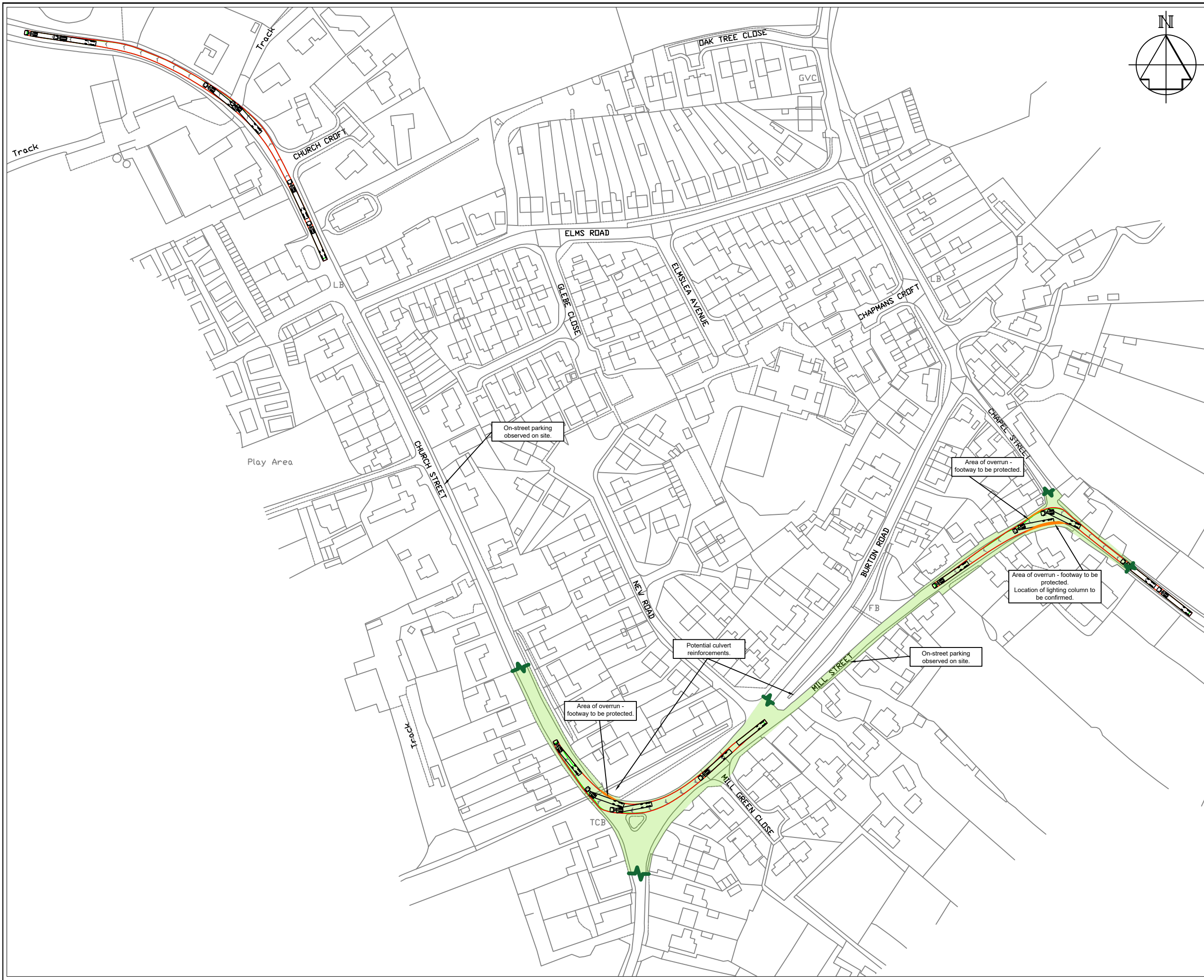
CLIENT
BayWa r.e

PROJECT
Oaklands Solar Farm

DRAWING TITLE
Indicative AIL Construction Vehicle Swept Path Analysis

BASE SCALE 1: 10 @ A3	DATE August 2023
--------------------------	---------------------

DRAWING NUMBER DWG/3299/011	REV A
---------------------------------------	----------



3200-3299/3299 Oaklands Solar Farm Project Files/CAD			
	A	MJ	16.08.23

REVISIONS	REV	Auth	DATE
-----------	-----	------	------

Key:

- Base mapping
- Vehicle body at widest point
- Vehicle wheel track at widest point
- Highway Boundary

Notes:

- Specific vehicle configuration to be checked by specialist haulage company. Do not rely on this drawing for confirmation of safety.
- Highway boundary extent only included on area where overrun has been identified.

Vehicle configuration

Broshuis TR18421B with OPL20117 Extended 6500
 Overall Length 23.980m
 Overall Width 2.550m
 Overall Body Height 3.417m
 Min Body Ground Clearance 0.341m
 Track Width 2.550m
 Lock to lock time 6.00s
 Wall to Wall Turning Radius 12.500m

For Information Only			
	A	MJ	16.08.23

PURPOSE OF ISSUE	REV	Auth	DATE
------------------	-----	------	------

Integrated Transport Planning Ltd
 Cornerblock
 2 Cornwall Street
 Birmingham
 B3 2DX
 Tel: 0121 285 7301
 http://www.itpworld.net

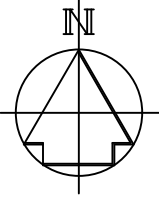
CLIENT
BayWa r.e

PROJECT
Oaklands Solar Farm

DRAWING TITLE
Indicative AIL Construction Vehicle Swept Path Analysis

BASE SCALE 1: 20 @ A3	DATE August 2023
--------------------------	---------------------

DRAWING NUMBER DWG/3299/012	REV A
---------------------------------------	----------



3200-3299/013 Oaklands Solar Farm/Project Files/CAD			
	A	MJ	16.08.23

REVISIONS	REV	Auth	DATE
-----------	-----	------	------

Key:

- Base mapping
- Vehicle body at widest point
- Vehicle wheel track at widest point

Notes:

- Specific vehicle configuration to be checked by specialist haulage company. Do not rely on this drawing for confirmation of safety.
- Highway boundary extent only included on areas where overrun has been identified.

Vehicle configuration

Broshuis TR18421B with OPL20117 Extended 6500	23.580m
Overall Length	2.550m
Overall Width	3.417m
Overall Body Height	0.341m
Min Body Ground Clearance	2.550m
Track Width	6.00s
Lock to lock time	12.500m
Wall to Wall Turning Radius	

For Information Only	A	MJ	16.08.23
----------------------	---	----	----------

PURPOSE OF ISSUE	REV	Auth	DATE
------------------	-----	------	------

Integrated Transport Planning Ltd
 Cornerblock
 2 Cornwall Street
 Birmingham
 B3 2DX
 Tel: 0121 285 7301
<http://www.itpworld.net>

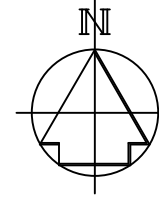
CLIENT
BayWa r.e

PROJECT
Oaklands Solar Farm

DRAWING TITLE
Indicative AIL Construction Vehicle Swept Path Analysis

BASE SCALE 1: 20 @ A3	DATE August 2023
---------------------------------	----------------------------

DRAWING NUMBER DWG/3299/013	REV A
--	-----------------



3200-3299/014 Oaklands Solar Farm Project Files\CAD			
	A	MJ	16.08.23

REVISIONS	REV	Auth	DATE
-----------	-----	------	------

Key:

- Base mapping
- Vehicle body at widest point
- Vehicle wheel track at widest point

Notes:

- Specific vehicle configuration to be checked by specialist haulage company. Do not rely on this drawing for confirmation of safety.
- Highway boundary extent only included on areas where overrun has been identified.

Vehicle configuration

Broshuis TR18421B with OPL20117 Extended 6500	
Overall Length	23.580m
Overall Width	2.550m
Overall Body Height	3.417m
Min Body Ground Clearance	0.341m
Track Width	2.550m
Lock to lock time	6.00s
Wall to Wall Turning Radius	12.500m

For Information Only	A	MJ	16.08.23
----------------------	---	----	----------

PURPOSE OF ISSUE	REV	Auth	DATE
------------------	-----	------	------

Integrated Transport Planning Ltd
 Cornerblock
 2 Cornwall Street
 Birmingham
 B3 2DX
 Tel: 0121 285 7301
<http://www.itpworld.net>

CLIENT
BayWa r.e

PROJECT
Oaklands Solar Farm

DRAWING TITLE
Indicative AIL Construction Vehicle Swept Path Analysis

BASE SCALE 1: 100 @ A3	DATE August 2023
---------------------------	---------------------

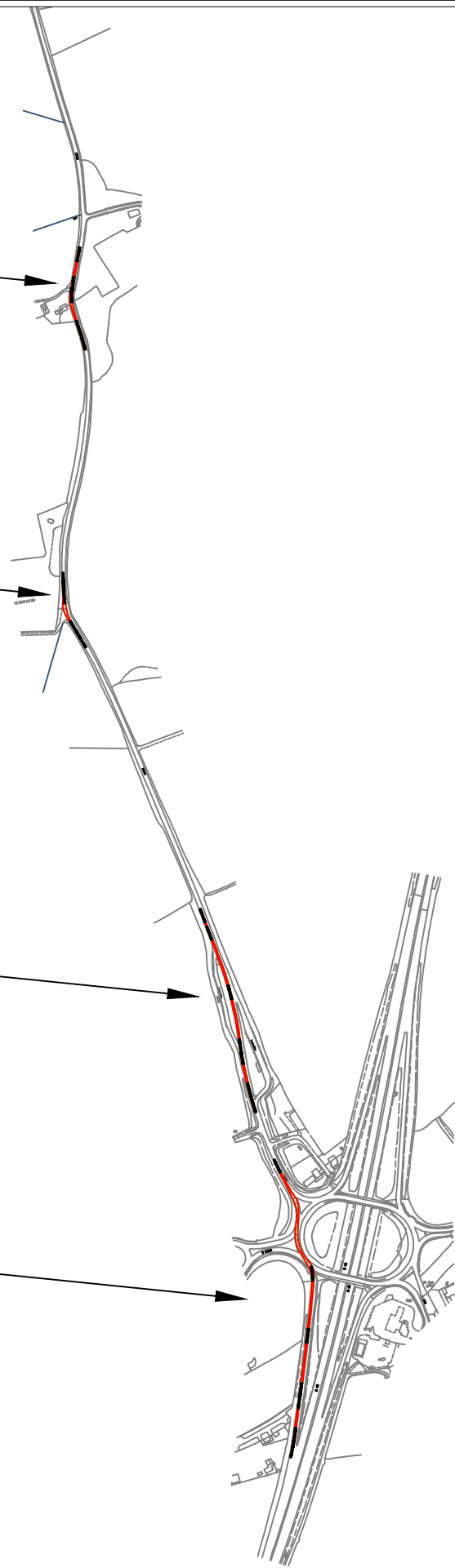
DRAWING NUMBER DWG/3299/014	REV A
---------------------------------------	----------

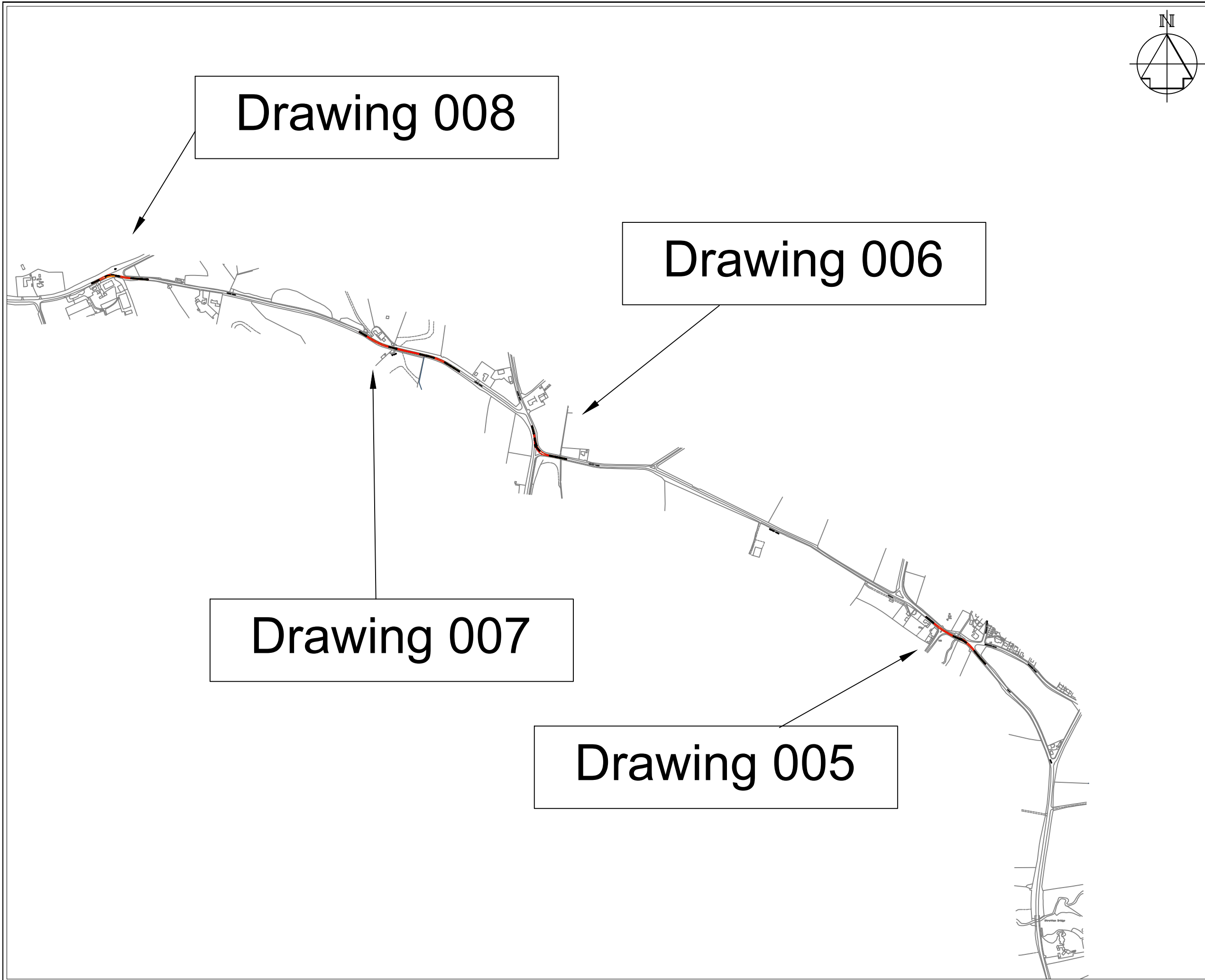
Drawing 004

Drawing 003

Drawing 002

Drawing 001



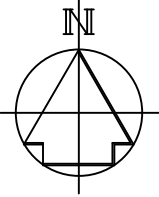


Drawing 008

Drawing 006

Drawing 007

Drawing 005



3200-3299/3299 Oaklands Solar Farm/Project Files/CAD			
	A	MJ	16.08.23

REVISIONS	REV	Auth	DATE
-----------	-----	------	------

Key:

- Base mapping
- Vehicle body at widest point
- Vehicle wheel track at widest point

Notes:

- Specific vehicle configuration to be checked by specialist haulage company. Do not rely on this drawing for confirmation of safety.
- Highway boundary extent only included on areas where overrun has been identified.

Vehicle configuration

Broshuis TR18421B with OPL20117 Extended 6500	
Overall Length	23.580m
Overall Width	2.550m
Overall Body Height	3.417m
Min Body Ground Clearance	0.341m
Track Width	2.550m
Lock to lock time	6.00s
Wall to Wall Turning Radius	12.500m

For Information Only			
	A	MJ	16.08.23

PURPOSE OF ISSUE	REV	Auth	DATE
------------------	-----	------	------

Integrated Transport Planning Ltd
 Cornerblock
 2 Cornwall Street
 Birmingham
 B3 2DX
 Tel: 0121 285 7301
 http://www.itpworld.net

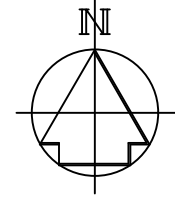
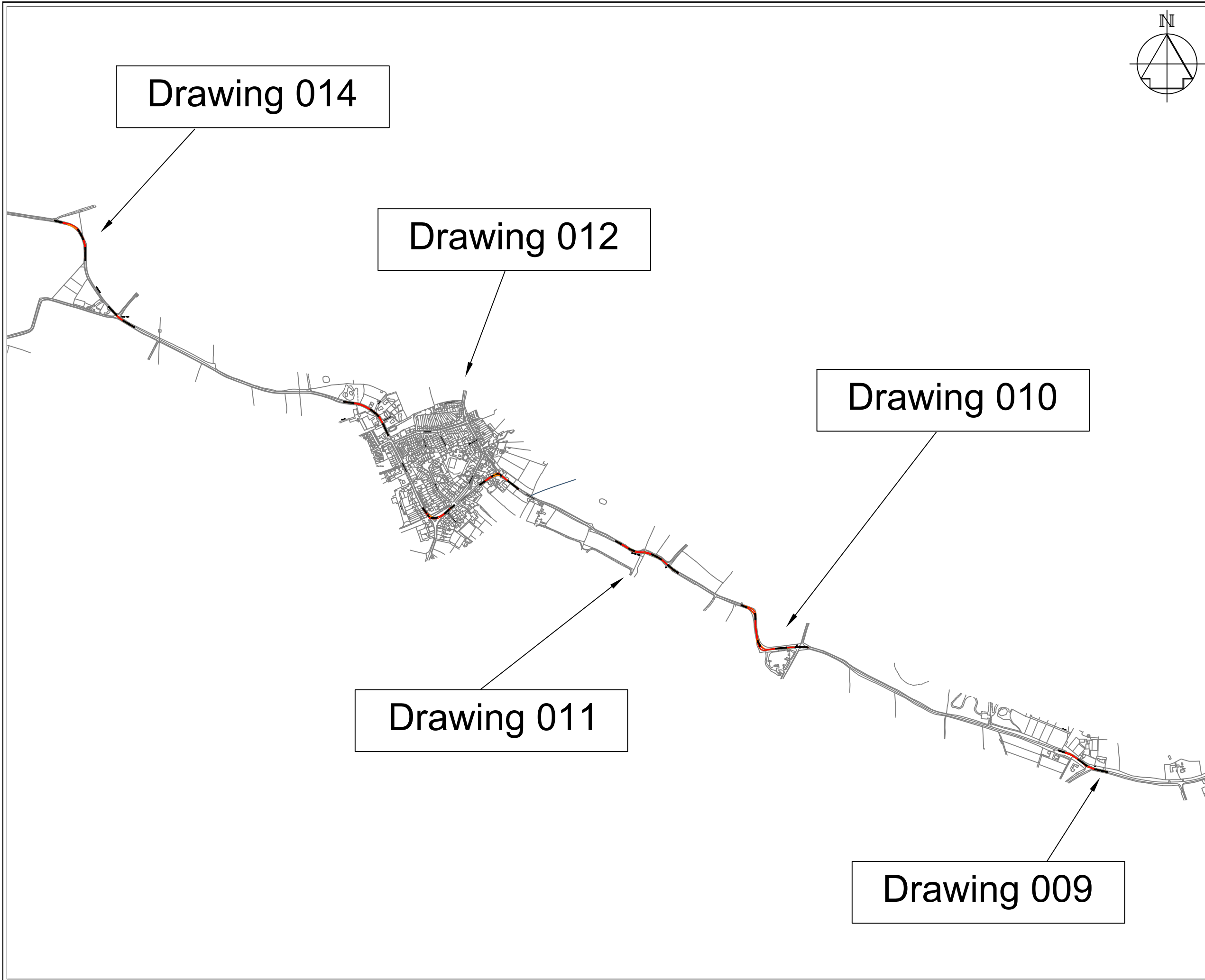
CLIENT
BayWa r.e

PROJECT
Oaklands Solar Farm

DRAWING TITLE
Indicative AIL Construction Vehicle Swept Path Analysis

BASE SCALE 1: 100 @ A3	DATE August 2023
---------------------------	---------------------

DRAWING NUMBER DWG/3299/015	REV A
---------------------------------------	----------



3200-3299\3299 Oaklands Solar Farm\Project Files\CAD			
	A	MJ	16.08.23

REVISIONS	REV	Auth	DATE
-----------	-----	------	------

Key:

- Base mapping
- Vehicle body at widest point
- Vehicle wheel track at widest point

Notes:

- Specific vehicle configuration to be checked by specialist haulage company. Do not rely on this drawing for confirmation of safety.
- Highway boundary extent only included on areas where overrun has been identified.

Vehicle configuration

Broshuis TR18421B with OPL20117 Extended 6500	
Overall Length	23.580m
Overall Width	2.550m
Overall Body Height	3.417m
Min Body Ground Clearance	0.341m
Track Width	2.550m
Lock to lock time	6.00s
Wall to Wall Turning Radius	12.500m

For Information Only	A	MJ	16.08.23
----------------------	---	----	----------

PURPOSE OF ISSUE	REV	Auth	DATE
------------------	-----	------	------

Integrated Transport Planning Ltd
 Cornerblock
 2 Cornwall Street
 Birmingham
 B3 2DX

Tel: 0121 285 7301
<http://www.itpworld.net>

CLIENT
BayWa r.e

PROJECT
Oaklands Solar Farm

DRAWING TITLE
Indicative AIL Construction Vehicle Swept Path Analysis

BASE SCALE 1: 150 @ A3	DATE August 2023
---------------------------	---------------------

DRAWING NUMBER DWG/3299/016	REV A
---------------------------------------	----------